



The European Commission support for the production of this publication does not constitute an endorsement of the contents which reflects the views only of the authors, and the Commission cannot be held responsible for any use which may be made of the information contained therein.

# Community waste management and capacity building among women's

**Country: Nepal**

**Partner: TUDE**



TUDE mission in training and involving community members in solid waste management is to aware, empower and make locals act to involve themselves in segregating and reducing waste at household level is one major way to solve the problem of waste management in country. In long term TUDE looks towards establishing a clean and green community with cooperation with help of community, organizations, groups etc within community.

## Initial Objectives

- To build capacity among community members for waste management.
- To build capacity among women's for recycling of matter.
- To make cooperation among community members and organization for waste management.

## Long term objectives

- To manage the waste at household level
- To manage waste of community
- To collect reusable and recycling material from households

## Methods for community engagement

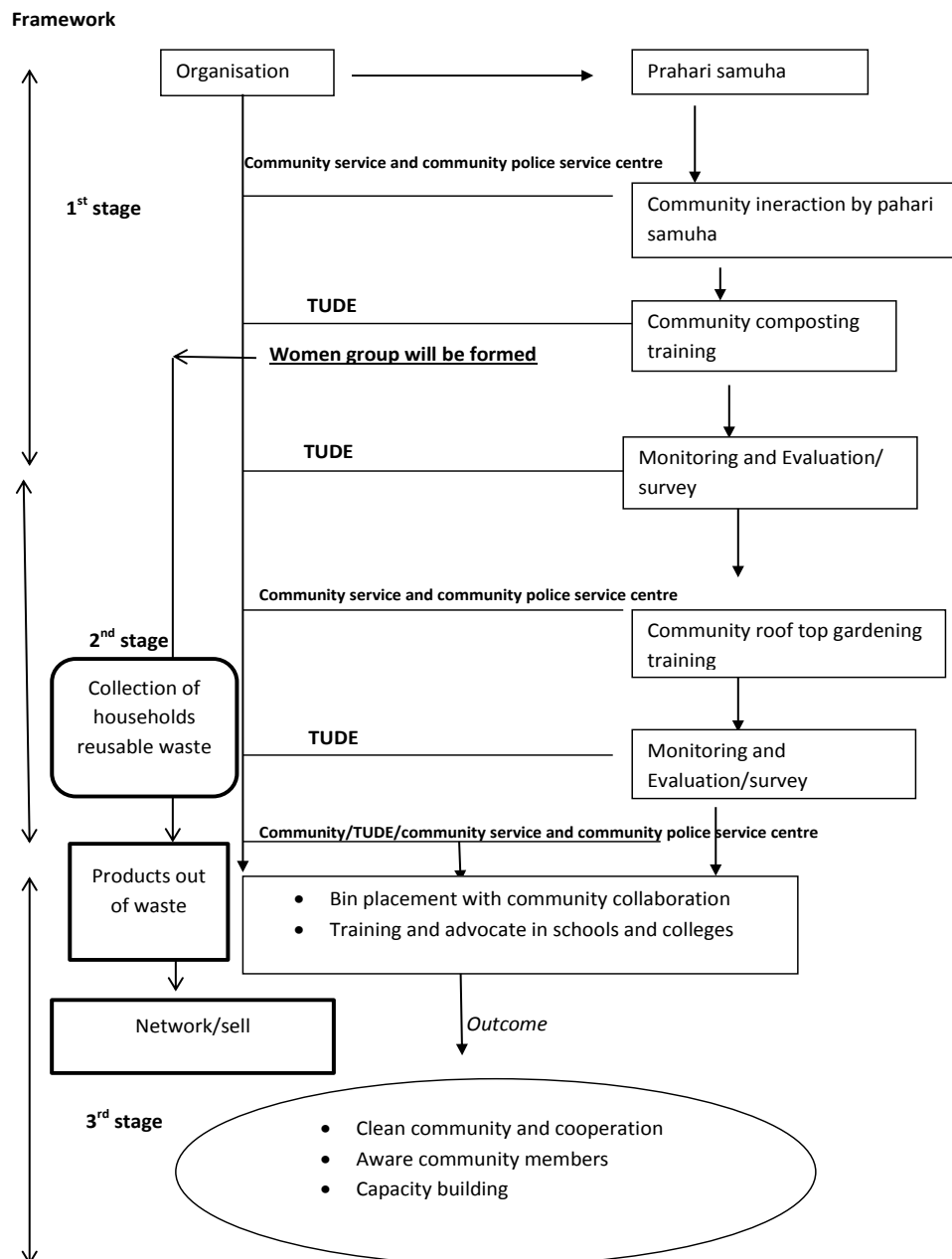
- Survey: Survey form for documentation of initial status of waste management at household level.
- Training: Training on.
  1. Composting
  2. Rooftop gardening
  3. Women group formation : Group will be created and trained on reuse and recycling of methods in organization
- Monitoring and Evaluation: After training, each house that was



The European Commission support for the production of this publication does not constitute an endorsement of the contents which reflects the views only of the authors, and the Commission cannot be held responsible for any use which may be made of the information contained therein.

- participated in training will be surveyed for initial waste management at their household level in order to measure the impact.
- Reusable waste collection: The participants will be asked to segregate the reusable and recyclable waste at house. So that it could be picked up once in 15 days by organization.
- Placement of segregation bins in areas: In long term, in coordination and support of houses bins will be placed in different area of community for proper waste segregation and management.

Community members will be trained on composting at first stage with the help community service and community police service centre in communication. All the trainings will be given by TUDE. The houses that participated in composting will be surveyed for effectiveness of training and practices after training. As most of the houses might not have enough space for utilizing manure, at second stage they will be trained on roof top gardening. After the successful involvement of these community members and their cooperation, segregation bins will be placed in different part of community.





## Outcomes

- Well aware community members
- Capacity building among members
- Proper waste management at household level
- Proper waste management at community level.



The European Commission support for the production of this publication does not constitute an endorsement of the contents which reflects the views only of the authors, and the Commission cannot be held responsible for any use which may be made of the information contained therein.